



Beth  
Longwell  
Foundation

# FOUNDATION CONNECTION

Summer 2019

## WELCOME OUR NEWEST SCHOLARSHIP RECIPIENT



Congratulations to our 2018 Scholarship recipient Stefany Rodriguez! Stefany just finished her first year of college at Cal Poly Pomona. She is majoring in Fashion Design and will be graduating in 2022. Stefany is having an amazing experience at

Cal Poly Pomona. Despite being the first in her family to attend college, she adapted very well and has found her support system. Stefany told the Foundation that, "I feel so at home at Cal Poly Pomona, and I am so happy that I can finally study something that I am passionate about."

Stefany shared her first semester grades with the Foundation, and we were thrilled that she continues in the footsteps of previous scholarship recipients earning a 3.80 GPA!

Stefany is very grateful to the Beth Longwell Foundation for helping her attend college and realize her life goals. She shared with the Foundation that, "Going to college was something that I had wanted since I was a little girl. Thanks to The Beth Longwell Foundation scholarship, I was able to attend the school that I had wanted to go to."

The Beth Longwell Foundation will continue to support Stefany through her four-year journey of learning at Cal Poly Pomona. We wish her all the best!

## *Save the Date, or Not!*

We are putting a new twist on our annual fundraiser this year. Don't buy a ticket and don't dress up because there is no place to go! Our 2019 "non-event" will be very special.

There will be opportunities to participate in a drawing for fabulous prizes!

**ONE HUNDRED PERCENT** of your donation will go to fund our wonderful grantees and scholarship recipients. Your donations are vitally important to our community. Please keep a look out for your "non-invitation" soon and help us carry forward Beth's wishes!

### Mission Statement

The Beth Levitas Longwell Foundation's mission is to positively impact the lives of children through support of charities and organizations in the areas of childhood education, non-smoking lung cancer research, and grief support for children who have lost a parent.

### Board Members

Jennifer Braun, Fran Cohen, Alice Erber, Meridith Herman, Claudette Kayne, Ellen Levitas, Jim Levitas, Robert Longwell, Carol Toppel, Liz Varela, Ava Yajima

## FOUNDATION FINANCIALS 2018

Established on September 4, 2007 as a California non-profit, public benefit corporation, the Beth Longwell Foundation is completely run by volunteers. Our board devoted its efforts in 2018 to fundraising and servicing our key initiatives as established in our Mission Statement. The table below summarizes the Foundation's financials and use of your generously donated dollars for 2018.

2018 Financial Summary	
Direct Public Support	\$14,192
Investment Income	\$1,377
Fundraising Income, Net	\$24,837
<b>Total Income</b>	<b>\$40,406</b>
Operations	\$11,636
Scholarships/Grants	\$42,500
<b>Total Expenses</b>	<b>\$54,136</b>
<b>Net Income</b>	<b>(\$13,730)</b>
Investments -- Unrealized	(\$5,827)
<b>Total Assets</b>	<b>\$84,362</b>

## UPDATE ON BLF SCHOLARSHIP RECIPIENT LIZ VARELA

In 2012, Liz was the first Beth Longwell Foundation College Scholarship recipient. She attended UC Riverside and graduated in 2016 with a BA in Sociology. The Beth Longwell Foundation supported Liz throughout her four years of college and she is extremely grateful. She told us that, "Receiving the scholarship was one of the best things that happened to me. I was able to attend UCR without having to worry about my tuition or books."

After graduation, she returned to the Bay Area and joined The Primary School as their School Operations Associate. She has been with The Primary School for the past three years and recently received a promotion and will soon transition to her new role as People Operations Associate.

Liz also joined the BLF board in 2017 and hopes to continue helping other first-generation students attend college!

## BELLA NOTTE!

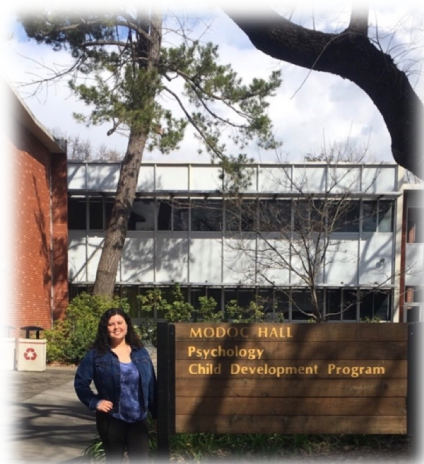
### 11<sup>TH</sup> ANNUAL DINNER AND SILENT AUCTION

Thank you to all who attended the Beth Longwell Foundation 2018 Annual Dinner and Silent Auction at Peninsula Building Materials in Mountain View. A great time was had by all as we were transported to Italy for a Bella Notte (Beautiful Night). With your generosity, we raised over \$26,000! The evening included soft guitar music by musician Ruth Parry, a beautiful setting, and delicious food, including handmade pizza courtesy of Peninsula Building Materials and their employees. A lung cancer research update was given by Dr. Barbara Gilitz from the GO2 Foundation for Lung Cancer (formerly the Bonnie J. Addario Lung Cancer Research Foundation). Karin Klarreich and Vicki Fujioka facilitated a wonderful silent auction, and Fund-a-Need raised \$12,000 for scholarship assistance. Several grantee recipient representatives attended, as well as our sponsors: **Wilbur Properties, John W. King, and Lion Equity.**



## UPDATE ON CRISTAL ORTIZ-VALENCIA

Cristal was the BLF's third college scholarship recipient, and we are excited to announce she will



be graduating next year from Chico State University. She is the first in her family to attend a 4-year University and is grateful to have the support of the Beth Longwell Foundation. Cristal's time in college has

been a great learning experience. She explains, "I had the opportunity to present at the annual Latina Leadership Conference, and speak in front of 30 middle school girls about their future/goals and how to achieve a successful college experience. I also spoke about my success and how I was able to attend a four-year university." Cristal shares that this by far has been her most memorable and favorite experience in college. Cristal's goal is to specialize in health psychology, and hopes to be a psychologist that helps people who suffer from mental illness and particular diseases. Cristal will be dedicating some of her time this upcoming semester volunteering at a youth under risk program, and is planning on being a counselor/recreational leader this summer for the city of Menlo Park in their child care department.

Cristal is grateful to have the support of the Beth Longwell Foundation and shares, "I am blessed that I have such great people supporting me and pushing me forward to reach my goals. Once again I want to say thank you for believing in me and supporting me all these years. There are not enough words to describe the gratitude and joy I have towards the Beth Longwell Foundation."

## THANK YOU AND GOODBYE TO BOARD MEMBER CAROL TOPPEL

We want to give a big BLF thank you to Carol Toppel for 5 years of dedicated work (and fun) to the Foundation's Board! During her time on the Board, Carol contributed in many ways including, leading the grant process, soliciting items for our auctions, coordinating performances and speakers at our annual event, and helping to distribute tax letters and event invitations. Carol is leaving the Foundation so that she can "play" with her husband Hal, who recently retired.

*"Carol was a special member of the BLF Board for many years. Her attention to detail, creative ideas, and willingness to work on all aspects of the organization are a testament to her character. She is caring and persistent and made sure the Board was focused on the BLF mission." -- Alice Erber*

*"I have known Carol for many years though I have worked with her on the BLF Board for only one. She impressed me with her clear thinking, quick grasp of a situation and her ability to come up with great solutions." -- Fran Cohen*

*"Carol has been a great contributor to the Foundation. She always came to the table with great ideas and a smile on her face. It has been a great pleasure working with her over the years. She shall be missed!" -- Jen Braun*

*"Carol is a smart, dependable, kind, get-it-done type of person. She asks the hard questions and doesn't shy away from hard work. She was a great addition to the Board and will be sorely missed." -- Ava Yajima*

*"Carol was an integral part of the BLF Board, as her ideas were plentiful and her energy was endless. She will be missed although I know she will stay involved with the future of the Foundation." -- Claudette Kayne*

We will miss Carol! She brought so much to the Board, helping to make sure our grant process and recipients stayed true to our Mission Statement and Beth's wishes.

## Tribute Card Donations Available

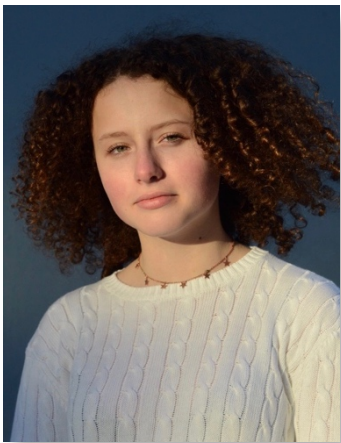
Make a gift donation in memory of a loved one, to commemorate a birthday, or another special occasion. A gift announcement card will be personalized and mailed to the person(s) of your choice. You can order online or send your request via mail. Visit our website at [www.bethlongwellfoundation.org](http://www.bethlongwellfoundation.org) for details.





## LUCY AND NATHAN UPDATE

**From Lucy:** "I have done so many fun things this year. To start, I had my B'nai Mitzvah with my brother in August, and I had lots of fun with my friends and family at the party. I joined a painting class at my school and have been enjoying it a lot, as well as continuing in my swim practice, which I go to three days a week. I have also been going to choir events and concerts, including going to Disneyland in March. I have enjoyed my year so far, and still have a lot more of it to go!"



**From Nathan:** "I am currently in eighth grade at JLS Middle School. I really enjoy school, there are so many different classes and options. For example, sculpture and gourmet cooking. This past summer I had my B'nai Mitzvah with my sister Lucy. I am currently playing travel baseball for



Team Kado. It is definitely a big step up from little league. I enjoy the competition and the drive to become a better player. Next year I will be a freshman at Gunn High school.

## GRANTEE UPDATE: KARA

Since the Beth Levitas Longwell Foundation was established, we have supported Kara's mission of providing grief support for the community. We help to fund Kara's Camp Erin, which is a free weekend-long grief camp for children ages 6-17 who have experienced the loss of a parent or caregiver. Since the camp began in 2008, Camp Erin has served 852 children. Throughout the weekend campers experience a combination of grief group activities facilitated by trained volunteers as well as traditional camp activities like swimming, rock climbing, arts and crafts, and a ropes course. Camp Erin provides the safety and the connection for children to meet peers who have also had a significant loss. This normalization alone is a huge part of what makes Camp Erin so special. It is rare for grieving children to meet others in their schools or day-to-day lives that share their unique experience. A camper from 2018 wrote,

*"I learned that it was okay to cry. It was so cool to be with a lot of other people who were grieving. This was a haven, a sanctuary, where the dead's names are uttered as much as the living, and where people can truly be who they are and share. We are surrounded by nature and love and people we just met, but are already lifelong friends. We can cry in public and truly feel the dead person's presence, and share things that keep them alive. We laugh, love, sob, sing, clap, and talk. This camp is so special and pure and ultimately one of the safest places I have been to." --13 year old camper*

The Beth Longwell Foundation is proud to support Kara's Camp Erin and their amazing work in our community.

## Please Donate Today

To make a tax-deductible donation to the foundation, visit us at [www.bethlongwellfoundation.org](http://www.bethlongwellfoundation.org) or mail your check payable to the Beth Longwell Foundation P.O. Box 50457 Palo Alto, CA 94303

